

GENERAL MEETING 2018

Mothers' UNION
Gofal Cristnogol i Deuluoedd

Bev Jullien

Chief Executive

Mothers' UNION
Gofal Cristnogol i Deuluoedd



Thank You!

Mothers' UNION
Gofal Cristnogol i Deuluoedd



The Duke and Duchess of Sussex
were overwhelmed by all the incredibly
kind words and letters they have received
on the occasion of their Wedding,
so touched that you took
the trouble to write as you did.

Most thoughtful of you
are very appreciated by
the Royal Highnesses
and your very best wishes.



The Duke and Duchess of Cambridge
were very touched that you took the trouble
to write as you did on the birth of their son,
Prince Louis.

Royal Highnesses are most grateful
for the wonderful messages they have received
and you their warmest thanks
and best wishes.

Prince Charles of Cambridge
23rd April, 2018

...For your warmth and hospitality...



For the difference you make at home...

Mothers' UNION
Gofal Cristnogol i Deuluoedd



Mothers' Union, General Meeting 2018



...and your Fundraising!

Mothers' UNION
Gofal Cristnogol i Deuluoedd



Enabling community transformation

Eg Savings & Credits in Rwanda



- **Over 20,000 Direct beneficiaries**
- **Nearly 100,000 Indirect beneficiaries**
- **889 savings groups**
- **88% started businesses**
- **Funding Health Insurance and social care**
- **Increased tithes to MU**

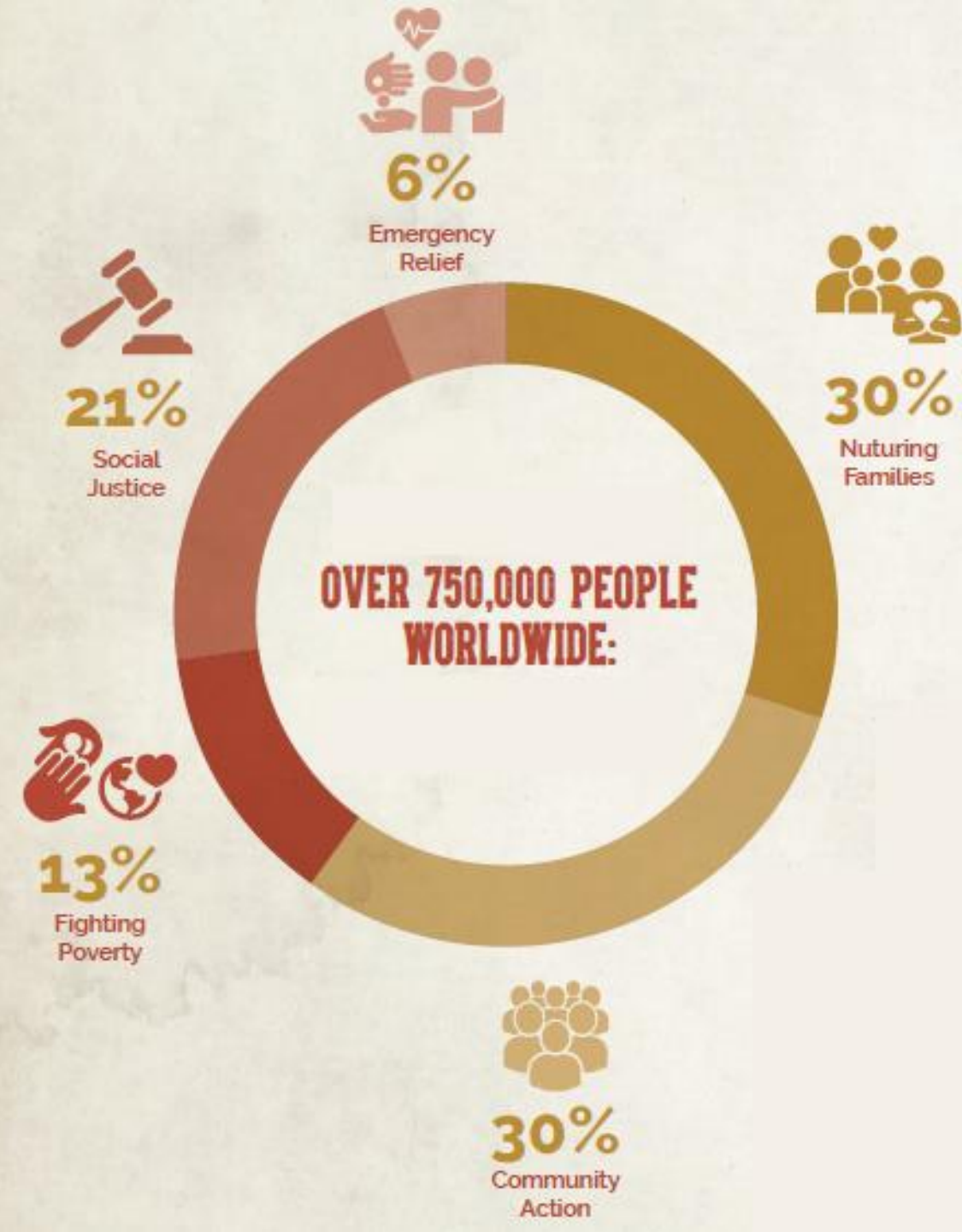
Which builds on locally funded work...

Mothers' UNION
Gofal Cristnogol i Deuluoedd



Mothers' Union, General Meeting 2018

... to help more than 750,000 people worldwide in 2017



Towards a New Dawn

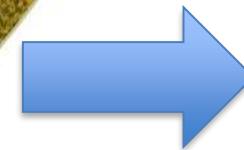
A ten year journey



SUNSET



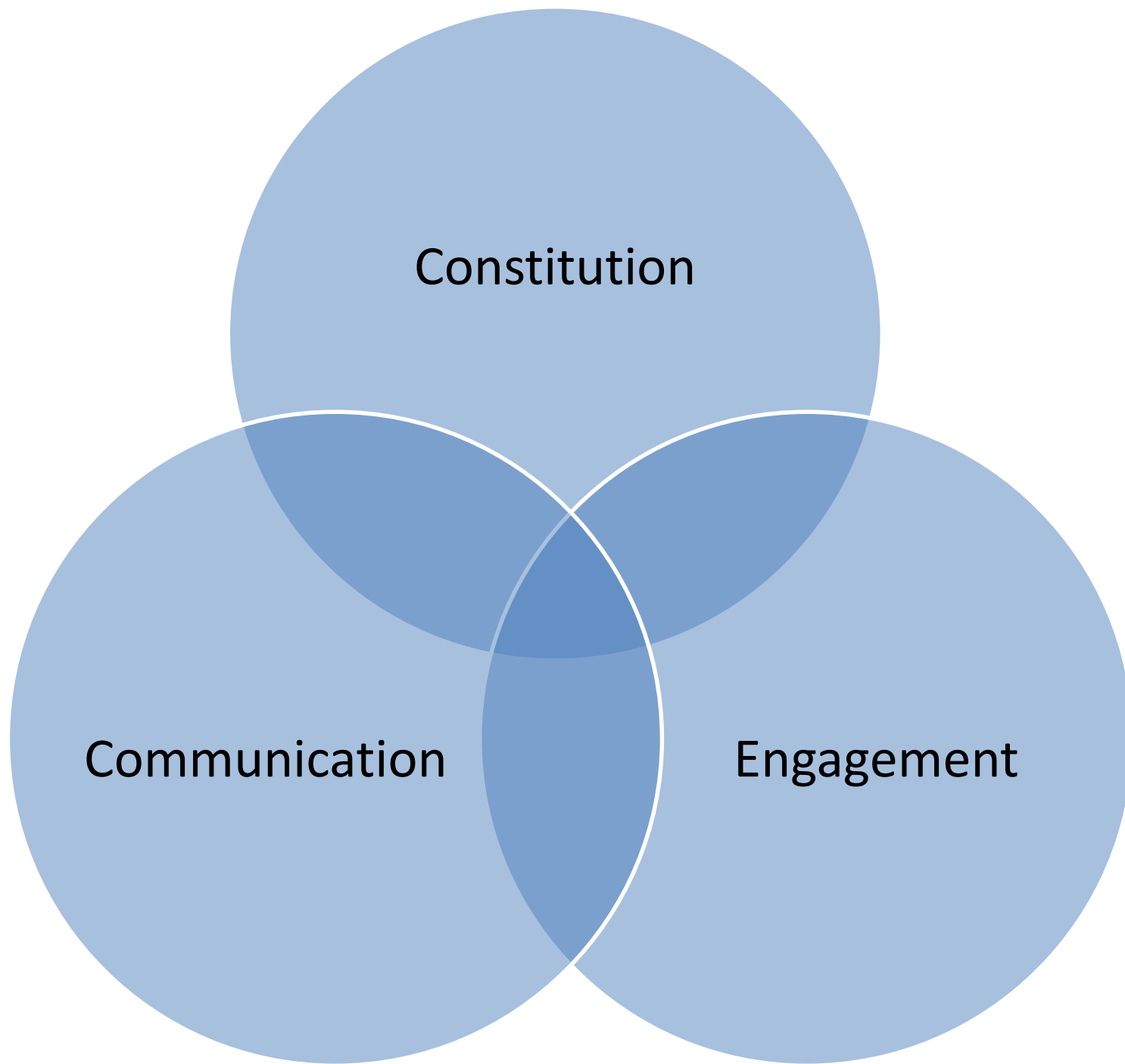
AUTUMN



NEW DAWN

Getting there....





A new constitution for our times: Approved April 2018



New Constitution...

- It's shorter! And meets modern governance standards
- Flexible framework for the future
- Allows evolution globally and locally
- Election results – week of 8th October
- No Unit Committees, but
 - “Communities of Interest” for Dioceses and members
 - Working Groups and Task Groups as required, involving members

Communities of Interest



Daniel McAllister:
FUNDRAISING



Richard Miller
**FINANCE &
GOVERNANCE**



Coleen Starkey
**MUE MEMBER
ADVISORY GROUP**



Catherine Kyte:
FAITH



Robert Dawes
DEVELOPMENT



Mary Santo:
POLICY



Sophia Jones
COMMUNICATIONS



Marian Pope
**MEMBER
DEVELOPMENT**



Katherine Hudson
**MEMBERSHIP
SUPPORT**



David Ewaku
**DIRECTORY
& WEBSITE**







**Help a family get away for
a holiday**

[I want to help now](#) >

Making a difference worldwide

Mothers' Union has members in 84 countries across the world. These members seek to serve people in their communities through outreach projects and various programmes. Members work tirelessly, offering Christian care for families, regardless of faith or background.





Join us today

and become part of a movement 4 million strong

Join us to fight for what's right for families - helping those around the world and around the corner.

Share this:



Join us and become a....

member or friend

of the global movement

member or friend

of a local group

- *Help me decide which way of joining is right for me.*
- *Why join?*
- *Tell me more about the benefits of joining.*

Join the global movement

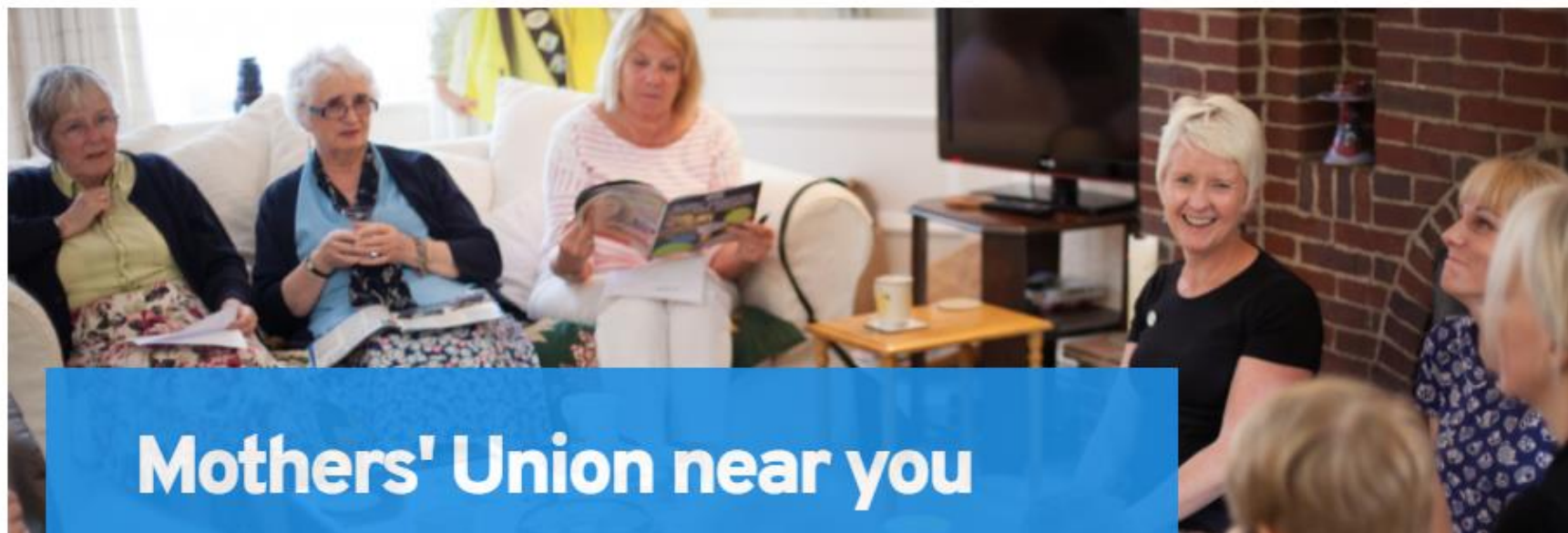
Join a local group



Membership and me

Find out more about what membership means to those who have already joined us.

“ Mothers' Union has made me who I am ”



Mothers' Union near you



Search by area:

London, UK

Search

Find my location



Or Diocese:

Swansea & Brecon

Apply

Swansea & Brecon > X

The northern part of the diocese is rural with the small





Mothers' Union Diocese of Swansea & Brecon

The Diocese of Swansea & Brecon Diocese extends from rural mid-Wales to the south Wales coast



The northern part of the diocese is rural with the small market towns of Knighton, Llandrindod Wells, Builth Wells, Hay on Wye, Crickhowell and Brecon. From Brecon, the diocese stretches through the Brecon Beacons and down through the Swansea Valley to the City of Swansea and the Gower Peninsula.

In Swansea & Brecon, members enjoy the fellowship of meeting in branches or of being a diocesan link. Members are committed to furthering the work of Mothers' Union by helping to fund a variety of projects which improve the lives of families both locally and worldwide. The first branch of Mothers' Union in Wales was formed in our diocese at Llandrindod Wells, in 1884, and

Support this Diocese

[Join us >](#)

Group and branch resources

Activities for a meeting

Looking for something different to do at your branch or group meeting? You could use some of these ideas to help create a varied programme for your group. And don't forget to look at the theme resources for meeting ideas relating to this year's theme!

2018 Theme: In Mary Sumner's Footsteps

2018 is a significant year for Mothers' Union, with our triennial elections and the beginning of global conversations throughout the Provinces to inform our way ahead. As we look to the future we want to build on our heritage, and in particular, the life and vision of our founder.....[Read More](#)

Services for a local branch or group

Worshipping together with local members is a vital part of Mothers' Union activities, which strengthens faith and binds members together in fellowship.

Prayer and Worship Ideas

Craft

Promoting Mothers' Union

Families First and Families Worldwide



- Families First – 2019:
 - 4 **member-focussed** issues
 - £10 per year Renewed direct with MSH now
- Families Worldwide
 - With in-depth country features
 - Move towards “direct to doormat” prayer diary
- Eventual integration

Mothers' Union Shop

Mothers' UNION
Gofal Cristnogol i Deuluoedd

**Windows advertise
MU work**

**Website Shop
remains and
developing**

MUe Reps continue

**"Pop ups" at
events**

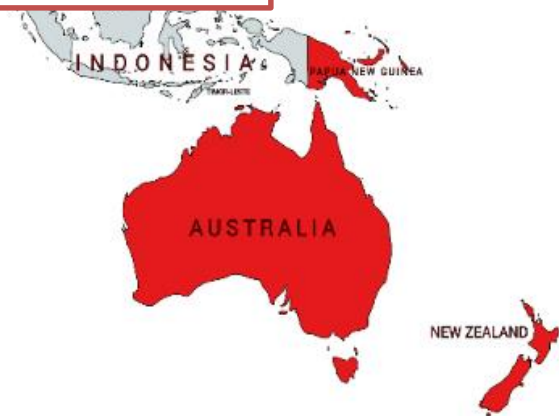






200,000 VOICES!

- Zone A
- Zone B
- Zone C
- Zone D
- Zone E
- Zone F
- Britain and Ireland



What is unique about
the MU 'Stick of Rock'?



At its heart... Faith!



Wrapped in 'fellowship'



Showing itself through a
kaleidoscope of actions!



Worldwide, MULOA helps revitalise!

- **New branch in Argentina**
- **Peru re-engaged**
- **Renewed relationship with South India**
- **West Malaysia affiliating**
- **Non-member facilitators joining MU**



So far in Britain and Ireland

Over 2,000 voices heard

***Affirmed my
skills &
Abilities***

***Members felt
valued and
included***

***Listen to
God more***

Re-Inspired

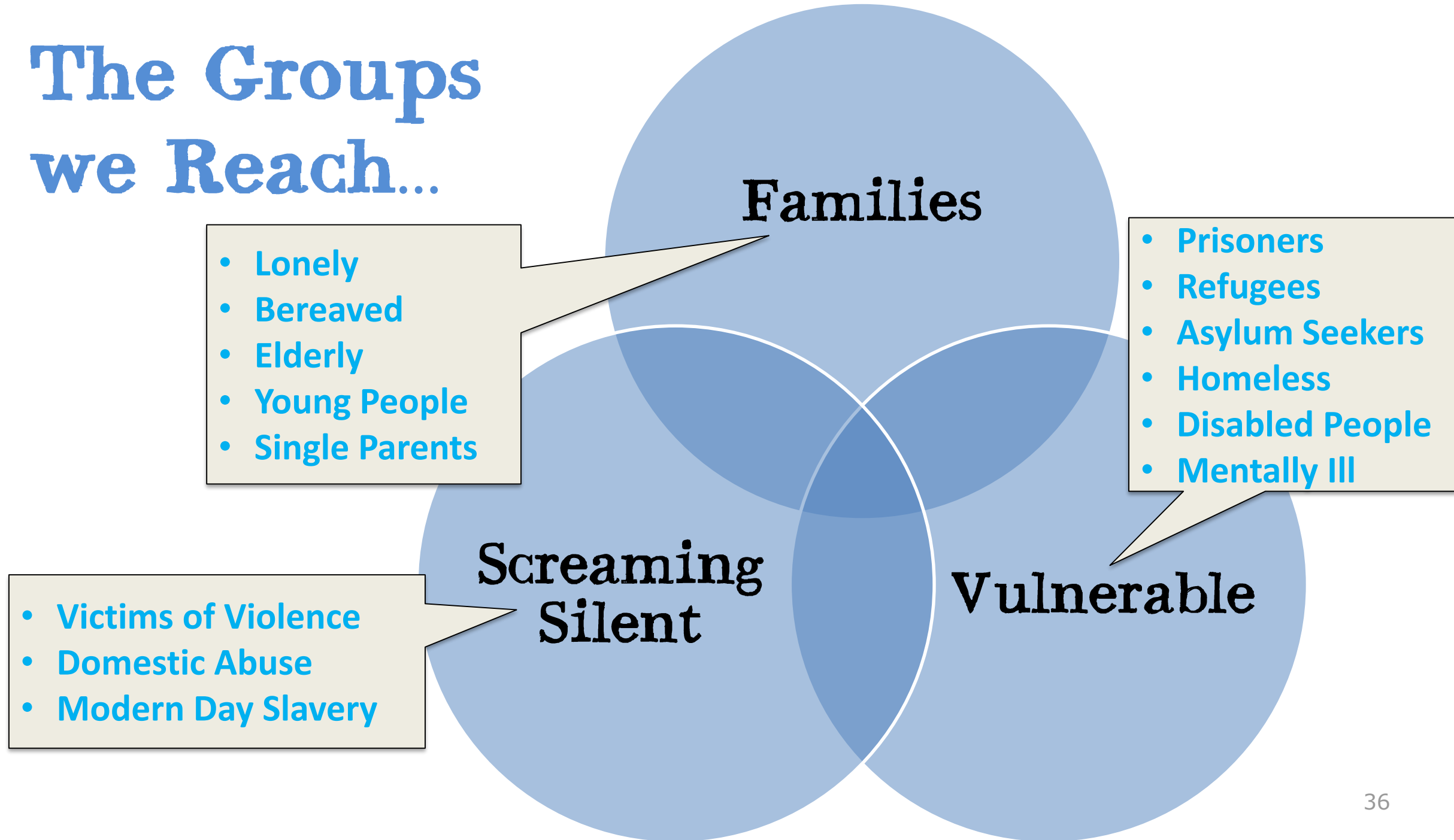
***Allowed
members
without a voice
to be listened to***

***I now stop and look
around me for the
need***

Rippling from the Small



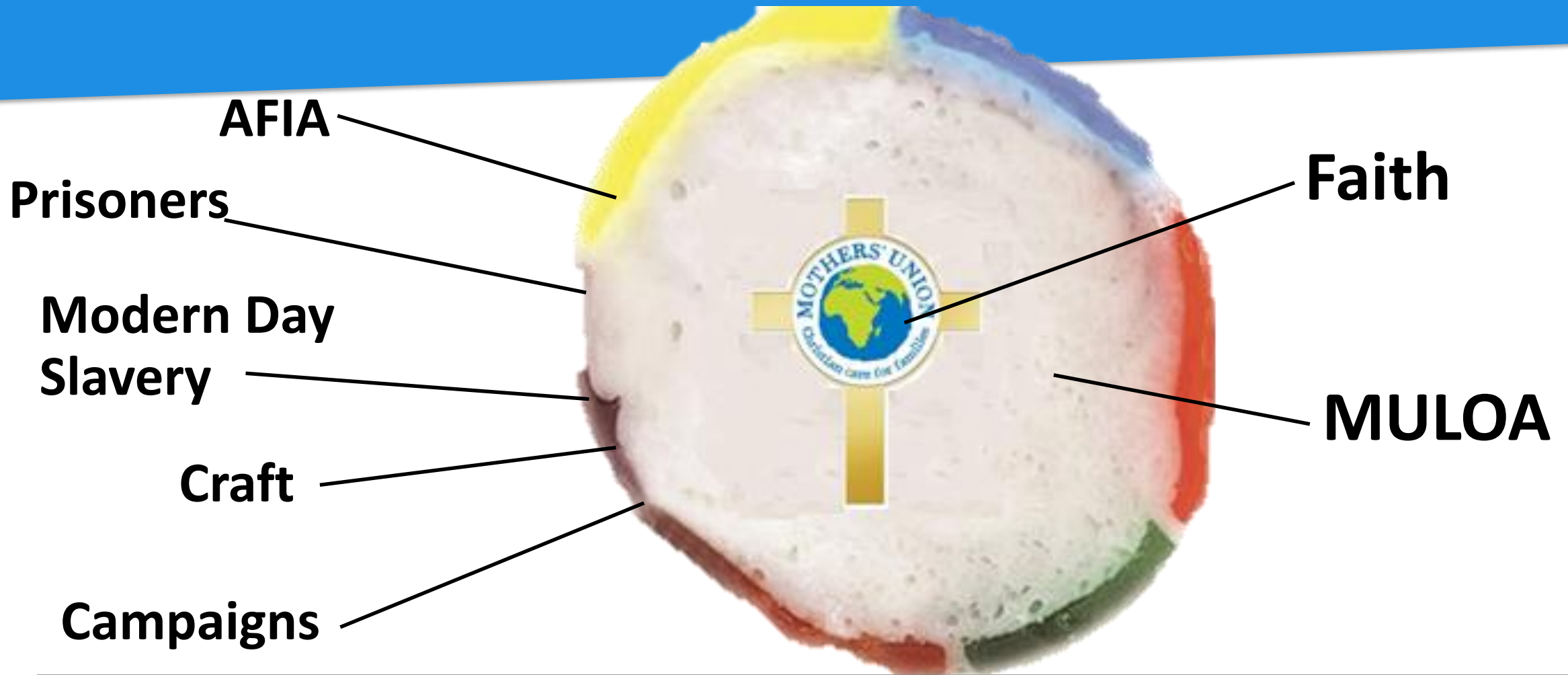
The Groups we Reach...



The B&I “flavoured” rock...



In Mary Sumner House, our work will align to Support you



In policy and campaigning we have...



Marched during '16 Days of Activism' against GBV



Advocated for Rural Women at UNCSW



Participated in RSE consultation

This year we will ...

Two major UK Government consultations-

Relationships and Sex Education:

- Today - please complete MU survey in your pack and put in box
- Please encourage others to complete the online survey

Domestic Abuse:

- We contributed to initial consultation
- Government currently reviewing responses
- Invite your views when the draft Bill is published

Also look out for....

Introduction to 16 Days of
Activism Campaign 2018

What is Gender-Based
Violence?

Different Forms of Gender-
Based Violence

Facts and Figures

Do's and Don'ts for
supporting survivors

Advocacy Suggestions
during 16 Days 2018

Bible Reflection 2018

United in Prayer - Global
Act During 16 Days 2018

Service Outline for
16 Days 2018

- **16 Days campaign**
- resources online!
- **Families First**
- **E-newsletter**
- **Website**

Make yourself known!



Mary Santo – Policy Adviser

Relationships Education and RSE Survey

The UK Government is in the process of writing its guidance on Relationships Education (RE) to be delivered in primary schools, and Relationships and Sex Education (RSE) to be delivered in secondary schools, across England. The equivalent guidance has not been updated since 2000. Mothers' Union is actively engaging in this process. We would welcome you completing this survey, so that we can include the results as part of our response to the consultation.

- 1 If you have experience of working with children or young people, are a relative to a child or young person, or have gained specific insights, it would be helpful to know in what capacity (e.g. grandparent, carer, teacher etc.)?
- 2 If you have regular communication with children or young people, what age(s) are they? ☐ 0-3 ☐ 4-7 ☐ 8-10 ☐ 11-13 ☐ 14-17 ☐ 18+
- 3 a) How confident do you feel in having conversations with children or young people about issues surrounding relationships education and RSE?
☐ Not at all ☐ Partly ☐ Completely
b) How equipped do you feel to have such conversations (e.g. from resources/information you may have)?
☐ Not at all ☐ Partly ☐ Completely
- 4 If resources linked to the new RE or RSE curriculum were available, how likely are you to use them to:
a) inform you about healthy relationships?
☐ Possibly ☐ Highly

Delighted to serve you!



Delighted to host you!



**CAN DO ALL THINGS
— THROUGH CHRIST**

GENERAL MEETING 2018

Mothers' UNION
Gofal Cristnogol i Deuluoedd